

Enterprise Mapping Manager

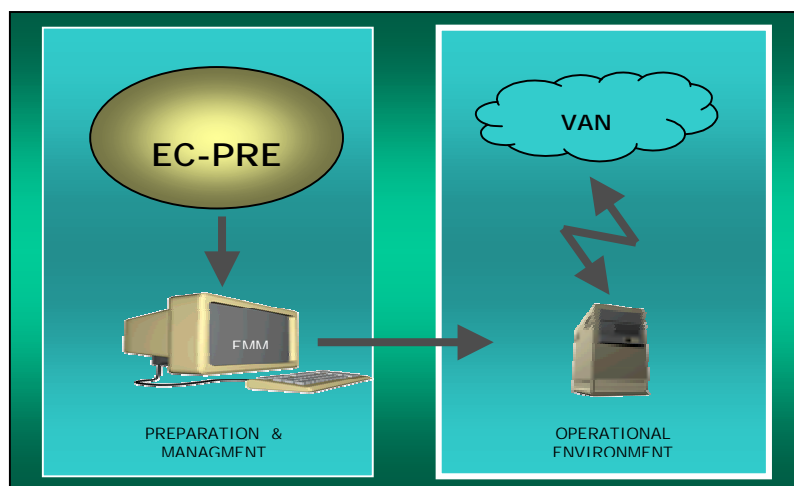
A comprehensive and flexible tool
The Enterprise Mapping Manager facilitates the process of describing how your applications should be linked to the required EDI messages. It is a comprehensive, flexible Windows tool which enables the administrator to set up and maintain mappings for multiple messages and the related applications.

A mapping is the description of the technical link between the data structure of your application and the EDI message supporting the business transaction.

Combined with one of the TIE Gateways, the Enterprise Mapping Manager will equip the EDI administrator with a tool to manage changes to the application or EDI environment. Easy to use drag and drop techniques make creating a mapping easier than it has ever been before.

Selection from our Reference List:

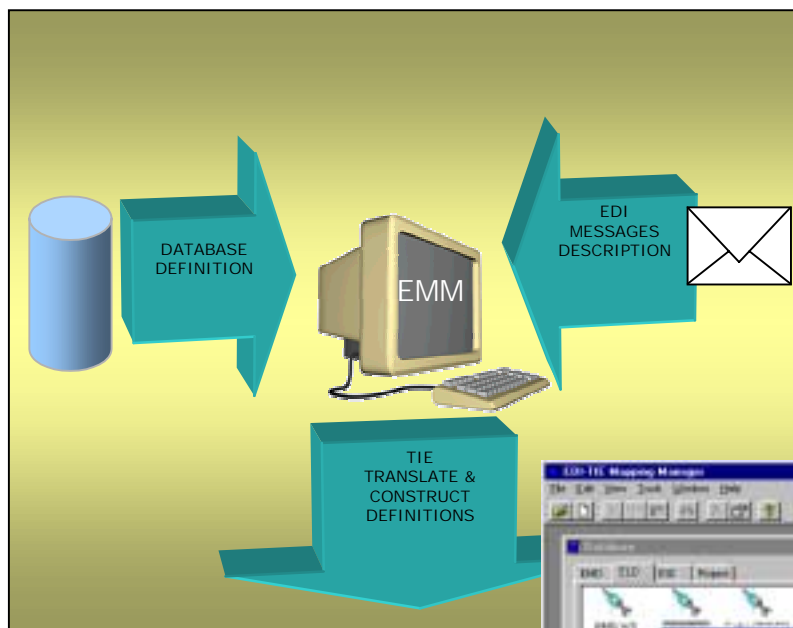
United Nations
Ahold
ATAG Holding NV
Bols Benelux
Commerce One
Exel Logistics
Fiat
Hallmark Cards
IBM
IDETA
Interbrew
NKF Cable
Oetker
Quality Bakers
Renault
Revlon
Smiths Food Group
TNT Express



Effective Implementation

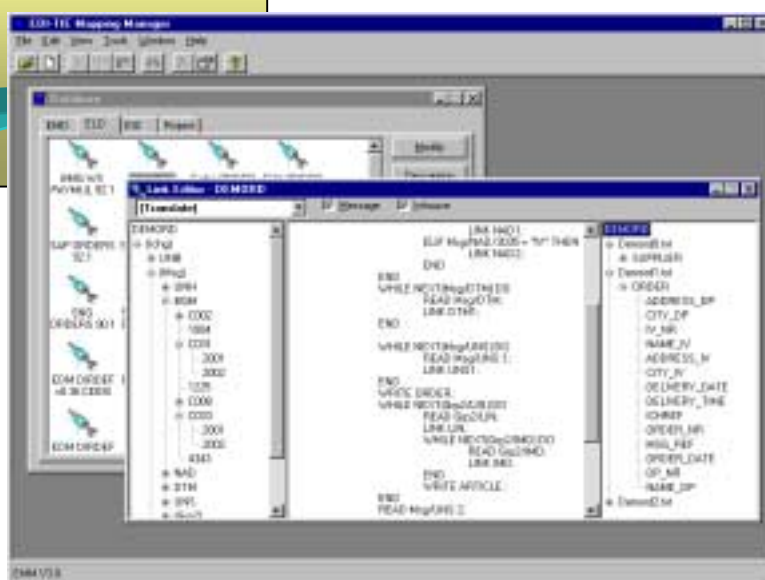
EDI messages of your choice can be shipped with the Enterprise Mapping Manager. This makes the implementation and effective working a quick and easy step. The creation of the application interface is made easy by means of pick-lists.

Field-level documentation can also be added. Documentation output of the EDI message or of the created mapping can be generated in either Rich Text Format (RTF) or HTML. Again, this is a development that makes managing your work an easy process.



As an optional service, TIE can pre-load the Mapping Manager with your in-house definitions, and create your mapping as well. As a result, the user can immediately begin with a generation of the definitions needed for an EDI implementation.

This, in turn, will reduce the system administrator's workload. The product is enabled with national language support. The default language is English.




Screen capture of the Enterprise Mapping Manager (EMM)

Related Solutions & Services


- Training
- Consultancy
- Enterprise Gateway Solution
- Enterprise Multi Gateway
- Enterprise Integrated Server

EMM is available for:

- Microsoft Windows 95
- Microsoft Windows NT Workstation
- Microsoft Windows NT Server



TIE HOLDING





LOCAL RESELLER:



PANTEON GROUP
 P.O. Box 65
 SI-4001 KRANJ
 Slovenia
 E-mail: info@panteongroup.com
 http://www.panteon.org

