



TIE
ENTERPRISE
PORTAL

The ideal open environment for B2B eCommerce

Working efficiently, that is what it is all about in B2B eCommerce. Integration of your company's applications with those of your commercial partners. This gives you a tactical advantage that you can directly see in your company's financial results. It also gives you a strategic advantage: you and your trading partner are forming a well-connected unit within which your businesses (and applications) cooperate well. This minimizes human intervention, and therefore human errors, to the bare minimum: checking whether all applications are running smoothly. This reduces the number of errors, speeds up communication, and improves accuracy, all of which in turn positively impacts your company's results.

Trading partners that do electronic business make a lot of demands on the level at which Business-to-Business eCommerce solutions support company – and application - integration. You cannot view your company as separated from the supply chain: it is an integral part of it. The TIE Enterprise Portal for that reason is the solution for the electronic exchange of messages: it allows you to integrate ERP, CRM, eProcurement, and legacy systems. Using this full integration with back-office processes in your company you can be assured that all your business processes run fast, efficiently and smoothly.

Applicable in any business environment

The Enterprise Portal suits all: from SME to multinational. To fulfil the requirements of all companies TIE has developed several models of the Enterprise Portal. The appropriate model depends on the number of transactions and the size and the structure of the company together with the internal and external technical infrastructure. In This way smaller companies can benefit from eCommerce and the savings associated with it. Larger companies have these benefits as well, but also profit from the fact that more business is conducted electronically because now more SME companies are connecting to eCommerce applications.

Integration front and back office

Using application integration it becomes possible to exchange information with trading partners and to import it into internal systems. Business transactions like orders, invoices and despatch advices can be exchanged in the form of messages. This can be done on the basis of standard formats and communication protocols. The TIE Enterprise Portal

support all popular formats and protocols. Buyers and suppliers can keep to the standards and infrastructure they are used to, and have been using for years; the Enterprise Portal takes care of that and at the same time opens the way for the future.

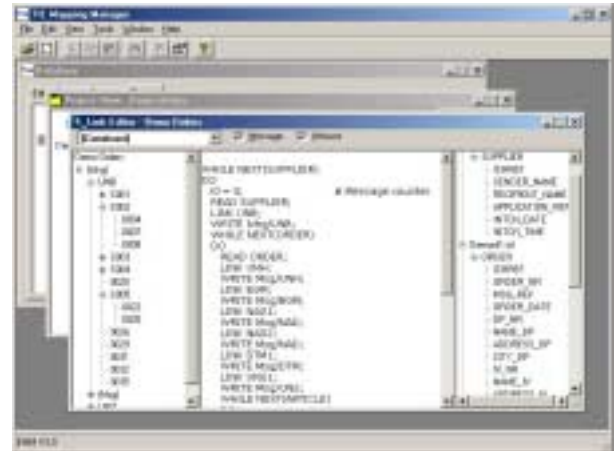
Communication

The TIE Enterprise Portal can be configured with communication modules for different protocols and network suppliers.

Modules are, available amongst others, for **SMTP/POP3, FTP, OFTP, X.400 P7** and Value Added Network Services (VANS), like **IBM Information Exchange, KPN 400NET Messaging Service** and **GEIS EDI *Express**.

Mapping Manager

Before any interaction between your application and a standard format can take place, mapping between the two needs to be done. This map contains the set of instructions that make the actual conversion between one and the other format. Integrated in the Enterprise Portal, the Mapping Manager allows you to build and maintain your mapping definitions. The implementation guidelines as they are published by the authors of EDI standards, form the starting point when building your maps. The Mapping Manager will lead you through the standard and can connect data elements by 'drag and drop'. Your Mapping Manager is the tool that can help you generate maps in a simple and intuitive manner.



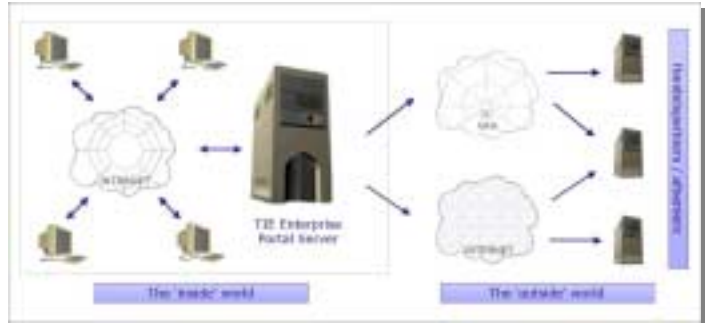
User friendly interface

The user interface allows access to an easy to learn menu structure. It gives maximum result at a minimum of effort. It allows you access to profiles and time schedules. Profiles define how the Enterprise Portal should recognize files that need to be sent or received. Incoming messages are automatically converted to a format in which internal applications can easily read them, while outgoing messages are converted to formats that your trading partners expect. Time schedules define the time at which messages are physically sent and received. This way, the communication process can be started at the time that suits you best: avoiding high telephone tariffs or peaks in communication traffic, or even handling time differences between you and your trading partner.



Up-to-date information

Behind the simple screens of the Enterprise Portal all communication processes, message archives and logs are registered in a well-organized fashion. The logs display all network-connected activities. Consequently, you always know the status of your messages. The administrator will immediately be warned, for example via e-mail, if a communication error occurs. The message archives offer the functionality to track sent messages, and even to resend messages if necessary. Updating the logs and archive, is a process that is handled in the background, so communication processes can run unhindered and user intervention is not necessary.



ebXML – The worldwide XML standard for Electronic Business

ebXML's unique approach for application to application exchange of information is based on solid experience of standardization of business processes, combined with the possibilities of the Internet and XML.

ebXML is a set of specifications that together describe a modular electronic business framework. The vision of ebXML is to enable a global electronic marketplace where enterprises of any size and in any geographical location can meet and conduct business with each other through the exchange of XML based messages. For that reason TIE has, as an innovative company and as one of the founders of ebXML, already prepared the Enterprise Portal for the use of this standard.

Message standards

The TIE Enterprise Portal offers support for message exchange in any XML formats like XML/EDI™ and ebXML, the EDI standards UN/EDIFACT, ANSI X12 and almost any other EDI standard you can think of.

Even local and sector specific standards, like SEDAS, GENCOD, TRADACOMS, VDA, ODETTE and CARGO-IMP are supported.

Advantages of the TIE Enterprise Portal

- All your business transactions in any data format
- Support of any network infrastructure using any communication protocol.
- Easy connecting of trading partners (including SME)
- Strategic collaboration with your partners
- Supports all popular eCommerce standards.
- It offers your application the possibility to use "old" standards while being able to adopt new standards as well
- Optimal efficiencies and cost savings by integration of both internal and external enterprise applications
- Cost savings by using the Internet as communication infrastructure instead of the traditional Value Added Network Services (VANS)

Technical specifications

TIE Enterprise Portal is available on the following operating systems:

- Microsoft Windows 98 / 2000
- Microsoft Windows NT Workstation
- Microsoft Windows NT Server

TIE Enterprise Portal has defined interfaces available for (among others):

- SAP R/3 (BAPI certified)
- BaanIV and Triton
- Oracle Financials
- UNIT4
- Exact

Other TIE B2B eCommerce solutions

TIE Messaging Center

A simple way to start eCommerce. This TIE solution takes work out of your hands instead of giving you more. The TIE Messaging Center delivers your information to your business partners in the way they want it, and processed incoming information in the way you need it. You do not have to worry about data conversion or communication protocols. TIE's Messaging Center will take care of this. This solution supports all eCommerce standards for communication and application integration.

TIE Catalog Manager

Correct article information is key for companies to successfully do eCommerce. Having all information on the articles available, it becomes a lot easier to exchange information in the supply chain efficiently and without errors. For example, a retailer can only place a correct order if the supplier has given the correct article numbers. The TIE Catalog Manager allows manufacturers and suppliers to collect article information (content) from the internal systems, to enhance and classify those, in order to make the information fit for publication and to distribute to the individual buyers, web-shops or eProcurement systems.

TIE eProcurement solutions

Using eProcurement, companies can simply and without error order goods electronically. This can be used not only for primary goods for the fabrication of products, but also for MRO goods, like office supplies, or temporary employees etc. To implement eProcurement solutions TIE can offer a selection of solutions from well-known eProcurement suppliers.

TIE web shop solutions

Place your articles in the worldwide shop window of the Internet. Naturally TIE offers a range of products that will allow you to expand your business to the Internet. TIE can deliver individual solutions but also offers products for groups of companies; all using their own styling. This way you could sell through your virtual shop, which can handle all transactions safely and securely. Integration with internal applications can be handled too, connecting the web shop with your business administration using TIE's eCommerce solutions. Integrating your business's back-office solution in this way secures optimal efficiency.

Services

To support you in your eCommerce initiative or project you can use the services of TIE Consultants. Our consultants can guide you with their specific knowledge and experience during all phases of your project.

Whether it concerns:

- Scanning your business processes
- Advising
- Project Management
- Tailor made products
- Implementation
- Helpdesk
- Content Management
- Partner implementation
- Training

TIE Consultants have proven their value many times over.

